

PARIS

Destination guide



#BeThatTeacher



Contents



3

Intro



8-9

Art



4

Quick facts



10

Recreation



5-7

History



7-8

Geography



An introduction to Paris

The City of Lights is home to over 10 million people and despite this high concentration and the 'Haughty' attitude on display, a school trip to Paris is likely to live long in the memory for all the right reasons. Once immersed within the city the senses become overwhelmed with the sheer grandeur of the place. At every turn imposing facades and sweeping vistas demand a photograph.

"Paris is achingly hip and a melting pot for all the creative arts."

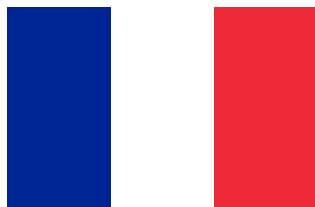
French, History, Art, Fashion, Music, Drama and Science students can gorge on all the city has to offer! Get lost in the Louvre, marvel at Grand Palais and Petite Palais, the Orangerie and Les Invalides, truly spectacular examples of Baroque and Beaux-Arts architecture that typifies the enormous wealth the city carries past and present.

In contrast Paris is achingly hip in its modern incarnation, it remains the world capital of high fashion and a melting pot for all the creative arts.

All visits are covered by our externally verified Safety Management System and are pre-paid when applicable. Prices and opening times are accurate as of May 2018 and are subject to change and availability. Booking fees may apply to services provided by Voyager School Travel when paid on site.

For the most accurate prices bespoke to your group size and travel date, please contact a Voyager School Travel tour coordinator at schools@voyagerschooltravel.com



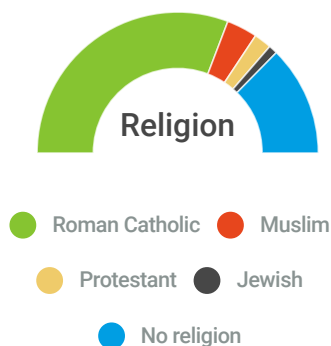
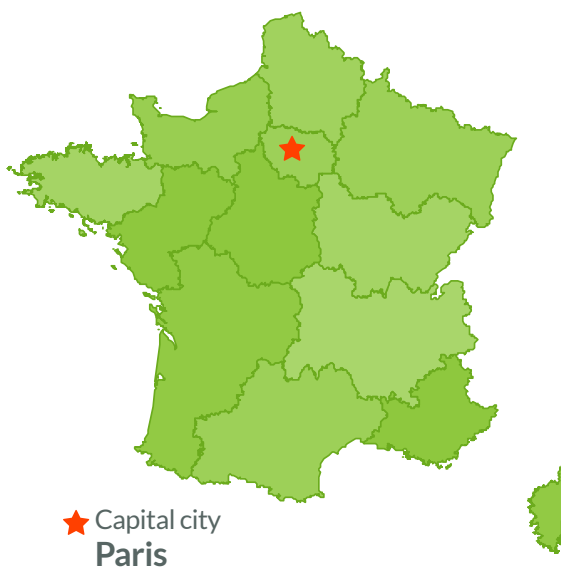
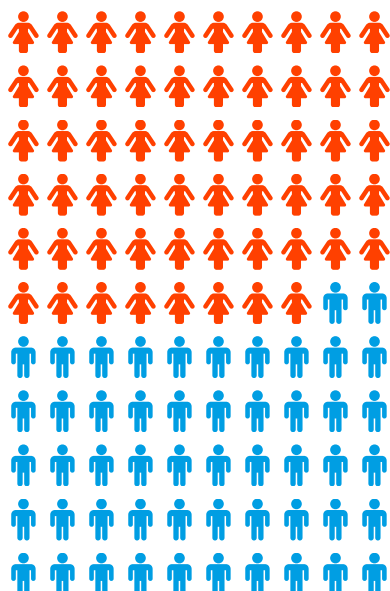


Did you know?

In total, there are 38 cities called "Paris" across the world!

Population

2,244,000



6 - 8 hours

Travel by coach



Arc de Triomphe

The Arc de Triomphe commemorates the successes of the Napoleonic War, celebrating the victories and the lives of those who died for its cause. Beneath the 'Arc' lies the tomb of the 'unknown soldier' from World War I, reminding visitors of the soldiers who anonymously died in battle during the Great War.

monuments-nationaux.fr/en

Price	Group fee 30€ on site
Opening times	Every day Apr - Sept: 10:00 - 23:00 Oct - Mar: 10:00 - 22:30 Closed Jan 1, May 1, May 8, Jul 14, Nov 11, Dec 25

Notre Dame Cathedral

Notre Dame de Paris ('Our Lady of Paris') is a historic Roman Catholic Marian cathedral on the eastern half of the Île de la Cité. Widely considered one of the finest examples of French Gothic architecture and among the largest and most well-known churches in the world ever built, Notre Dame is the church that contains the cathedra (official chair) of the Archbishop of Paris.

notredamedeparis.fr

Price	Free Towers group fee 30€ on site
Opening times	Every day: 08:00 - 18:45 Sat/Sun: 08:00 - 19:15

La Conciergerie

La Conciergerie is a former royal palace and prison in Paris, located on the west of the Île de la Cité, near the Cathedral of Notre-Dame. It is part of the larger complex known as the Palais de Justice, which is still used for judicial purposes. Hundreds of prisoners during the French Revolution were taken from La Conciergerie to be executed on the guillotine.

paris-conciergerie.fr/en

Price	Group fee 30€ on site
Opening times	Every day: 09:30 - 18:00

Mémorial de la Shoah

A visit to the Memorial de la Shoah (Holocaust), located in the Marais district of Paris, is a powerful and moving experience for people of all ages – and has often brought visitors to tears. The memorial holds significant documentation and photographs about the Holocaust in France.

Price	Free Workshop £6pp Group guide £50
Opening times	Sun - Weds: 10:00 - 18:00 Thurs: 10:00 - 22:00 Fri: 10:00 - 18:00 Closed Jewish holidays

The Catacombs of Paris

The ossuary holds the remains of about six million people and fills a renovated section of caverns and tunnels that are the remains of Paris's stone mines.

Opened in the late-18th century, the underground cemetery became a tourist attraction on a small scale from the early 19th century, and has been open to the public on a regular basis since 1874. A word of warning: visitors have described the catacombs as being like a large open cemetery so be prepared for seeing thousands of skulls and bones!

catacombes.paris.fr/en

Price	Free for students
Opening times	Subject to availability Tues - Fri: 10:30/11:00/11:30/12:00

La Grande Arche de la Défense

La Grande Arche was designed to be a 20th-century version of the Arc de Triomphe, but as a monument to humanity and humanitarian ideals rather than military victories. Completed in 1989, the giant arch is twice the size of the Arc de Triomphe.

grandearche.com

Price	£7.50pp
Opening times	Every day: 10:00 - 19:00

Musée Carnavalet – History of Paris

This popular museum occupies two neighbouring mansions: the Hôtel Carnavalet and the former Hôtel Le Peletier de Saint Fargeau. Beautiful paintings and furniture throughout the museum with many different departments to explore including Archaeology, Models and architectural models, Middle Ages and Art and history.

Price	Free
Opening times	Tues - Sun: 10:00 - 18:00 Closed Mondays and bank holidays

Le Panthéon

Le Panthéon is an impressive neoclassic building in the Latin Quarter of Paris. Built in 1790, the façade of the building is based on the Pantheon in Rome. For almost the entire 19th Century, well before the Eiffel Tower, Sacré Coeur de Montparnasse and the Montparnasse Tower, the Panthéon was the first building that visitors to Paris would see. Today the building is a mausoleum in which many of France's famous people are buried, including Voltaire, Rousseau, Zola and Marie Curie. You can also enjoy spectacular views of the city.

paris-pantheon.fr/en

Price	Group rate 30€ on site
Opening times	Apr - Sept: 10:00 - 18:30 Oct - Mar: 10:00 - 18:00 Closed Jan 1, May 1, Dec 25, Apr 27, Jun 17

Paris Story

Interactive museum and show about the history and culture of Paris. A cinema with a 12-meter-wide panoramic screen, with Victor Hugo appearing via holographic video, you will travel through 2000 years of history with thousands of photographs, filmed documents and archive images.

paris-story.com

Price	£6pp
Opening times	Every day: 10:00 - 18:00

Versailles



In 1682, when Louis XIV decided to move the royal court from Paris to Versailles, France saw the construction of Europe's most magnificent palace, the Palace of Versailles. At one point, the construction of Versailles cost 4 per cent of France's total annual budget, despite the fact that peasants were suffering from severe food shortages!

en.chateauversailles.fr

Price	Students free Group guided tour £75
Opening times	Contact your Voyager salesperson

Le Château de Vaux-le-Vicomte

A baroque French château located in Maincy, near Melun, 55 km southeast of Paris. It was built from 1658 to 1661 and was an influential work of architecture in mid-17th century Europe. At Vaux-le-Vicomte, the architect Louis Le Vau, the landscape architect André le Nôtre, and the painter-decorator Charles Le Brun worked together on a large-scale project for the first time. Their collaboration marked the beginning of the "Louis XIV style" combining architecture, interior design and landscape design.

vaux-le-icomte.com/en

Price	£9pp - £12pp
Opening times	17 Mar - 4 Nov Every day: 10:00 - 19:00

Le Château de Fontainebleau



The Palace of Fontainebleau, located 55 kilometres from the centre of Paris, is one of the largest French royal châteaux. The palace as it is today is the work of many French monarchs, building on an early 16th century structure of Francis I. The building is arranged around a series of courtyards.

musee-chateau-fontainebleau.fr

Price	Under 18s free Adults 12€pp on site Group guided tour 65€ on site
Opening times	Every day: 09:30 - 17:00 Closed Tuesdays

Le Musée Grévin

A Waxwork Museum that now contains some 450 characters arranged in scenes from the history of France and modern life, including a panorama of French history from Charlemagne to Napoleon III, bloody scenes of the French Revolution, movie stars, and international figures such as Albert Einstein, Mahatma Gandhi, and Pope John Paul II.

grevin-paris.com/en

Price	£13pp group rate
Opening times	See website for timetable

Le Musée des Egouts de Paris (Sewers)

Le Musée des Égouts de Paris, or the Paris Sewer Museum, is a great way to find out about the sewer system of Paris. Tours of the sewers have been popular since the 1800s and it's still fascinating to visit the sewers, especially as they are still working. Visitors walk on raised walkways directly above the sewage which isn't as smelly as you might think! There is also an underground museum located in an ancient disused sewer. The entrance to this unusual tour is near the Pont de l'Alma.

egouts.tenebres.eu/visite.php

Price	Group rate 3.60€pp on site
-------	----------------------------

Opening times	Sat - Weds: 11:00 - 17:00
---------------	---------------------------

Eiffel Tower

Created as the centrepiece of the Paris' Exposition Universelle in 1889, the tower has come to symbolise Paris. You can experience wonderful views from every floor and angle over the beautiful and historic French capital. You can go all the way to the top but most of our groups only venture up to the second floor as the queue for the final lift is often over an hour long.

toureiffel.paris/en

Price	Prices vary Contact your Voyager salesperson
Opening times	Subject to availability Contact your Voyager salesperson

Tour Montparnasse

Tour Montparnasse, is a 210-metre (689 ft) office skyscraper located in the Montparnasse area of Paris, France. Constructed from 1969 to 1972, it was the tallest skyscraper in France until 2011. The tower provides amazing views of the city and its monuments.

tourmontparnasse56.com/en

Price	£8pp
Opening times	Apr - Sept: 09:30 - 11:30 Oct - Mar: 09:30 - 10:30/11:00

Île de la Cité

Île de la Cité sits at the centre of Paris and is one of only two natural islands that remain on the River Seine (the other being the Île de Saint Louis). Go there to see the astonishingly impressive Notre Dame with its stunning Rose window, or the Sainte Chapelle, which is considered by some to be the most beautiful church in Paris. The Île de la Cité is also home to the Palais de Justice, Le Prefecture de Police, La Conciergerie and Le Hotel-Dieu Hospital.

Boat Cruises

See Paris from a different angle and admire the Eiffel Tower lit up by night. This cruise lasts 1hr 15mins and commentaries are provided in English and French.

bateaux-mouches.fr
bateauxparisiens.com

Price	Under 17s £5pp
Opening times	See websites for timetables and availability





Sainte Chapelle

This small gothic chapel was built by Louis IX in the 1240s to house relics from the Holy Land, believed to be the Crown of Thorns and part of the True Cross. Stained glass windows surround the entire upper floor and when the sun shines the space is filled with light and colour.

The chapel itself is now surrounded by the Palais of Justice on the Ile de la Cité near Notre Dame. It has two 'tiers', the first one at ground level being rather dark and close, the second one having radiant tall windows, as well as a small balcony.

sainte-chapelle.fr

Price	Group fee 30€ on site
Opening times	2 Jan - 31 Mar: 09:00 - 17:00 1 Apr - 30 Sept: 09:00 - 19:00 1 Oct - 31 Dec: 10:00 - 17:00

Le Parc et Château de Thoiry

Large Chateau and grounds built in 1559, now with zoo and play area situated West of Paris, further out than Versailles. The Chateau first opened its doors to the public relatively recently in 1968 giving access to the ground floors whilst the family still live upstairs. The then Comte, Paul de la Panousse, created his revolutionary zoo and African reserve where wild animals roam freely and visitors remain in their vehicles!

thoiry.net

Price	Park £14pp + £1pp petit train Chateau Group guided tour £30
Opening times	Every day Mid Feb - Mid Nov: 10:00 - 17:00

Le Musée du Louvre

Once home to the French Royal family, the Louvre is the largest art museum in the world. It houses pieces from ancient history right through to the nineteenth century and boasts such famous works as the Mona Lisa and the Venus de Milo. The collection is divided into 8 departments and owing to its size, a visit to the museum should be well-planned in order to get the most out of it.

louvre.fr

Price	Free for school groups Ask Voyager for assistance
Opening times	Subject to availability Closed Tuesdays

Le Musée de l'Orangerie

An art gallery of impressionist and post-impressionist paintings located in the west corner of the Tuileries Gardens next to the Place de la Concorde in Paris. Though most famous for being the permanent home for eight Water Lilies murals by Claude Monet, the museum also contains works by Cézanne, Matisse and Picasso among others.

musee-orangerie.fr

Price	Free for school groups
Opening times	Closed Tuesdays

Le Musée d'Orsay



Most famous for its late nineteenth and early twentieth century artworks featuring pieces by Monet, Manet, Degas, Renoir, Cezanne, Gauguin and Van Gogh. Interestingly it was originally built to be a railway station, but quite quickly it became redundant as trains became too long for the platforms that had been built. The museum bridges the gap between the Louvre and the National Museum of Modern Art at the Centre Pompidou.

musee-orsay.fr

Price	Free for school groups + audio guide 5€pp on site
Opening times	Tues - Sat: 09:30 - 16:00

Pompidou Centre

The Centre Pompidou houses the National Museum for Modern Art, a vast public library and a centre for music and acoustic research. It has the biggest collection of Modern Art in Europe and has received over 150 million guests since it opened in 1977. Modern art, scientific exhibitions, working models, not to mention the building itself, combine to create a vivid experience.

centrepompidou.fr

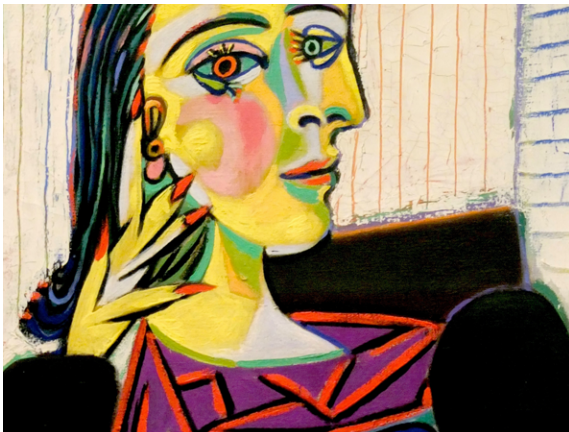
Price	Group rate £30
-------	----------------





Opening times	Every day: 09:30 - 19:00 Closed Tuesdays No groups on weekends
---------------	--

Musée Picasso



Housing over 3000 pieces of Picasso's work including sketch books, sculptures, ceramics and paintings. Also pieces from Picasso's own collection including, Cezanne, Degas, Rousseau and Matisse. The building in which the collection is housed was built between 1656 and 1659 and is considered to be one of the finest historic houses in the Marais district, one of Paris's oldest quarters.

museepicassoparis.fr/en/

Price	Group 80€ on site 60 min guided tour 130€ on site 90 min guided tour 170€ on site
Opening times	Tues - Fri: 10:30 - 18:00 Sat/Sun: 09:30 - 18:00 French school holidays Tues - Sun: 09:30 - 18:00

Musée Dalí

A superb little gallery in Montmartre dedicated to Dalí's life and work.

daliparis.com

Price	£7pp
Opening times	Every day: 10:00 - 18:00 July - Aug: 10:00 - 20:30

Musée Marmottan

Featuring a collection of over 300 Impressionist and Post-Impressionist works by Claude Monet (with the largest collection of his works in the world), Paul Gauguin, Pierre-Auguste Renoir and much more.

marmottan.fr/uk/

Price	Group fee £15 + 6.50€pp on site
-------	------------------------------------

Opening times	Tues/Weds: 10:00 - 18:00 Thurs: 10:00 - 21:00 Fri - Sun: 10:00 - 18:00
---------------	--

Musée Rodin

The Musée Rodin is a museum that was opened in 1919, dedicated to the works of the French sculptor Auguste Rodin.

musee-rodin.fr/en

Price	Students £7pp Adults £11pp Group with audio guide £65
Opening times	Tues/Weds: 10:00 - 18:00 Thurs: 10:00 - 21:00 Fri - Sun: 10:00 - 18:00

Le Palais de Tokyo

The Palais de Tokyo is a contemporary and modern art museum close to the river Seine.

palaisdetokyo.com/fr/

Price	Group rate £50
Opening times	Every day: 12:00 - 00:00 Closed Tuesdays

La Cité de l'Architecture & du Patrimoine

The Cité de l'Architecture et du Patrimoine is an architecture museum. Its principal permanent exhibit is the Museum of French Monuments, which contains three galleries. The museum also houses the French Institute of Architecture, which presents temporary exhibits in addition to maintaining an extensive library and archives.

citechaillot.fr/en/

Price	Under 18s free
Opening times	Mon/Weds: 11:00 - 19:00 Thurs: 11:00 - 21:00 Fri - Sun: 11:00 - 19:00 Closed Tuesdays

Le Musée du Quai Branly

The Quai Branly Museum features the indigenous art and cultures of Africa, Asia, Oceania, and the Americas. The museum collection has 450,000 objects, of which 3,500 are on display at any given time, in both permanent and temporary thematic exhibits.

quaibranly.fr/en/

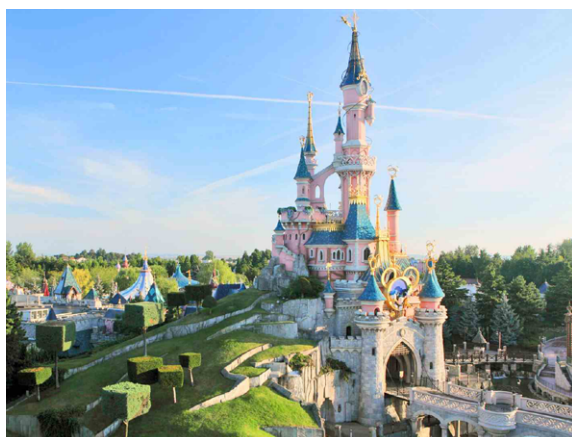
Price	Free
Opening times	Tues/Weds/Sun: 10:00 - 19:00 Thurs - Sat: 11:00 - 21:00 Closed Mondays



Provins Town

Fortified medieval market town with heritage sites and shows, 1hr East of Paris. Town is free to walk around and visit the medieval streets, shops and walls. Has a lovely market set against the fortifications and several festival days when the town dress up. You will need to arrange coach travel for this excursion.

Disneyland Paris



Disneyland Paris is home to two theme parks, Disneyland Park and The Disney Studios as well as seven hotels and a shopping, dining and entertainment complex called the Disney Village. Every day watch the Disney Magical Parade at 7pm on Main Street. Also catch the Disney Dreams Anniversary Show every evening during the last hour of park opening.

disneylandparis.co.uk/events

Price	Contact your Voyager salesperson
Opening times	Contact your Voyager salesperson

Le Stade de France

Take a guided visit of Europe's eighth largest football stadium that has a capacity for 80,000 people. On the 12th July 1998 France won the Football World Cup trophy at this very stadium against the Brazilian National team, 3-0. The Stade de France is the only stadium in the world to have hosted both a Rugby World Cup and a Football World Cup, so go and find out other facts, myths and legends of this sporting arena.

stade-france.com/en/stadium/stadium-history

Price	£9pp
Opening times	Subject to availability Every day: 09:30/11:30/14:30 Closed Mondays Sept - Apr

Parc Asterix

Within easy reach of Paris, the Parc Asterix provides student groups with brilliant day trips from April through to October each year. There are over fifty rides and attractions, live entertainment, arts and special effects, so you're sure to remain well-entertained!

parcasterix.com

Price	£18pp
Opening times	Contact your Voyager salesperson

Aquaboulevard

Paris's largest waterpark featuring slides, wave machines and a wide selection of different swimming pools.

aquaboulevard.fr

Price	£10pp
Opening times	Mon - Thurs: 09:00 - 23:00 Fri: 09:00 - 00:00 Sat: 08:00 - 00:00 Sun/Bank holidays: 08:00 - 23:00

Sherwood Parc

Set in 11 acres of woodland just outside Paris, this park can accommodate up to 700 visitors at a time. With a Robin Hood theme and various activities on-site, this is the ideal day out for fun! Opening times are seasonal, so please ask for more info. Snack shop and cafe on-site.

sherwoodparc.com

Price	Primary students £12pp Secondary students £16pp
Opening times	See website for seasonal timetable

Brie Farm

Learn the history of cheese making and see first-hand how it's produced today in this farm based in Jouarre, near Paris. You'll even be treated to a tasting session at the end of visit! You will need to arrange coach travel for this excursion.

fermes-brie.fr/uk.html

Price	Group rate 4€pp on site
Opening times	Contact your Voyager salesperson



Lost in Frenchlation

Bridging the gap between French and English audiences, Lost in Frenchlation displays the best of French cinema to visitors with English subtitles.

Price	Contact your Voyager salesperson
Opening times	Contact your Voyager salesperson

Jardin du Luxembourg

Close to the Île de la Cité, the Luxembourg Gardens are one of the most popular gardens for visitors to Paris. Stretching 25 hectares and containing a fountain, pond, forest, bee yard and greenhouses. Catch a concert in the bandstand and browse the free photography exhibitions.

Price	Free
Opening times	Winter: 08:00 - 17:00 Summer: 07:30 - 20:00

Grands Boulevards

Les Grand Boulevards are the greatest of the boulevards in Paris. Great for your group to do some shopping during free time.

Les Halles

Les Halles is a popular shopping district located along Rue de Rivoli with many large brand stores to browse.